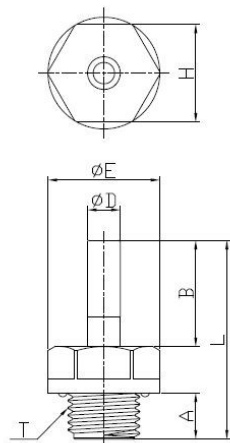




Modello RPR810

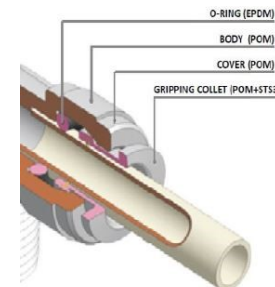


Tipo di Fluido : Acqua , Bevande , Aria compressa

Temperatura di esercizio : 0.....+70°C

Pressione d'esercizio : 0.....20 bar

Materiali costruttivi :



Codice	ØD	T	A	B	ØE	H	L
RPR810-04-G01	4	1/8"	6	18	16,6	15	32,5
RPR810-04-G02	4	1/4"	8,5	18	20,5	18	35
RPR810-06-G01	6	1/8"	6	19,5	16,6	15	34
RPR810-06-G02	6	1/4"	8,5	19,5	20,5	18	36,5
RPR810-08-G01	8	1/8"	6	21	16,6	15	35,5
RPR810-08-G02	8	1/4"	8,5	21	20,5	18	38
RPR810-08-G03	8	3/8"	9	21	24,2	22	38,5
RPR810-10-G02	10	1/4"	8,5	24	20,5	18	41
RPR810-10-G03	10	3/8"	9	24	24,2	22	41,5
RPR810-10-G04	10	1/2"	12,5	24	28,5	26	45
RPR810-12-G03	12	3/8"	9	28	24,2	22	45,5
RPR810-12-G04	12	1/2"	12,5	28	28,5	26	49
RPR810-15-G04	15	1/2"	12,5	36	28,8	26	57
RPR810-22-G06	22	3/4"	14,5	41	39	33	67,5